

REPOSITORY

REPOSITORY
HUMAN WORKFLOW
SERVICE DESK

**One look is worth a thousand words.
Get the Big Picture.**



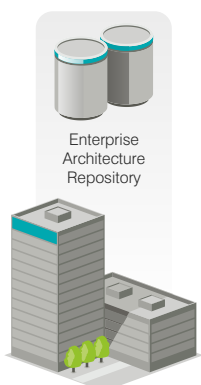
Delivers...

- ✓ A unified architecture information repository
- ✓ The ability to handle multi-level environments and relationships
- ✓ Highly flexible meta-model
- ✓ Live reporting on any information segment with powerful filtering capabilities
- ✓ Live graphical maps of the architecture and relationships
- ✓ Change management workflows

Supports you in...

- ✓ Enterprise-wide architecture management initiatives
- ✓ Building an auditable repository of your enterprise universe with relationships
- ✓ Understanding your complexity
- ✓ Decision making through straightforward graphical maps and views of your environment
- ✓ Compliance, Timing and Governance of individual projects

Due to the diversity of needs and interests within the enterprise, companies have developed highly complex IT and business environments over the years. It is probably impossible to reduce this complexity substantially, and analysts suggest that with new technologies emerging, it will even increase. However, complexity needs to be managed to enable business progress. Managing it right can simplify your operations and improve business offerings to your customers and partners, thus it can directly contribute to generating a competitive edge. SAMU (System Architecture Management Utility) addresses this management issue by delivering a complete Enterprise Repository and Change Management solution to map and organize comprehensive business and IT environments. By providing a highly flexible meta-model and the ability to show content in multiple contexts, it offers great value to all parties involved in IT and Business decisions:



IT Managers: Assets and resources utilized to serve business needs undergo constant change. IT Managers are responsible to operate this floating heterogeneous environment and justify IT investments to Business leaders. As an IT Manager, you need to have a clear understanding of the hardware and application environment, as well as the relationships and dependencies between them. *SAMU empowers IT Managers with the Big Picture of the entire environment and provides indispensable architectural background information and straightforward graphical maps for decision making.*



Business Managers: Studies show that up to 30% of the increasing annual IT spending is wasted. It has a double negative effect on the firm: first the "investment" is financing something that does not advance the company; second, it takes more money to realign the result with enterprise goals. Investments must be targeted well to deliver outcomes that contribute to strategic goals. *Enterprise Architecture Management can have a direct effect on your bottom line by enabling you to identify the points of competitive advantage and improvements quickly and clearly. It also gives the ability to prove your business is compliant, transparent and secure at any point of time.*



Project Managers: As it is your responsibility to control the monetary, time and resource aspects of the project and deliver the desired outcome, you need to scope and plan carefully. Planning must be based on accurate environmental information. *Building your project on up-to-date enterprise architectural data, instead of re-discovering it over and over, will save you tremendous amounts of time along with budgetary and human resources.*

With its powerful engine and uniquely flexible meta-modeling capabilities, SAMU has already helped our customers to

- ➔ define the process of company mergers and acquisitions by providing a unified map of different organizations;
- ➔ map their IT assets to business processes;
- ➔ clearly distinguish resources and responsibilities;
- ➔ identify their TO-BE architectures and the point of investments more accurately;
- ➔ size and implement the projects more efficiently on the basis of reliable information;
- ➔ track changes in hardware and software architectures and visualize communication flows;
- ➔ identify potentially harmful security holes in information topology and application communications;
- ➔ verify external companies providing outsourced services in terms of what they can have access to, what communication channels they're allowed to use, and what the exact scope of their services and SLAs is.

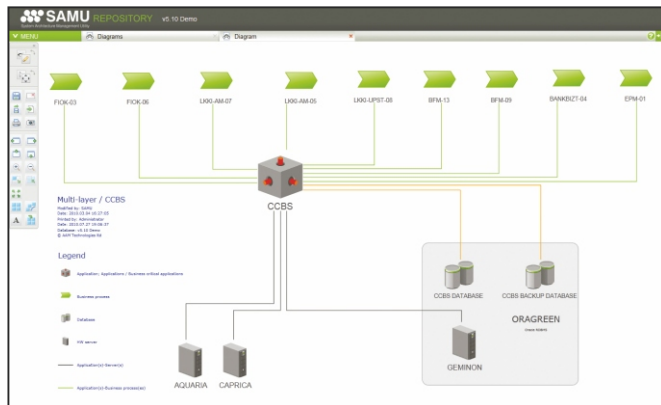


Figure 1: Application 'CCBS' is used by various business processes (top). It runs on multiple servers, has one database for storage and one as backup (bottom).

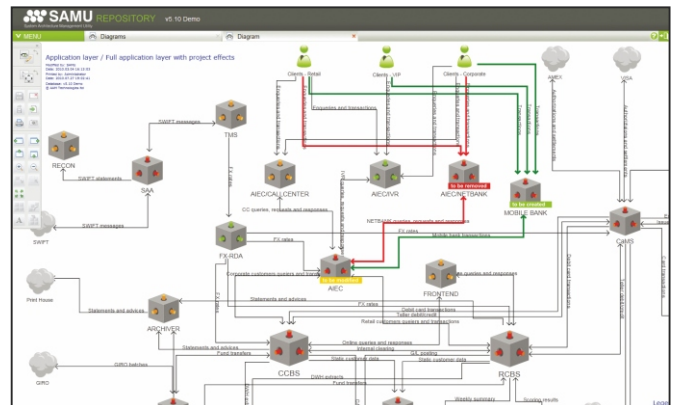


Figure 2: Connections of the same 'CCBS' application to other systems and organizations. The impacts of projects are also shown.

We're proud that SAMU has helped the following respected clients with increased management capabilities:



Finance: MKB Bank (member of Bayerische Landesbank), Hungarian Central Clearing House and Depository, Erste Bank (member of Erste Bank Group), OTP Bank (Hungary), Merkantil Group (Hungary), OTP Fund Management (Hungary), OTP Building Society (Hungary), OTP Garancia Insurance (Hungary), OTP National Health Fund (Hungary), OTP Private Pension Fund (Hungary), OTP Voluntary Pension Fund (Hungary), OTP Real Estate (Hungary), OTP Life Annuity (Hungary), OTP Flat Lease (Hungary), DSK Bank (Bulgaria), OTP Banka Hrvatska (Croatia), OTP Bank Romania (Romania), OTP Banka Slovensko (Slovakia), OTP Banka Ukraine (Ukraine)

Telecommunication: Magyar Telekom (member of Deutsche Telekom)

Professional services: HP Enterprise Services (formerly EDS)

Utilities: Waterworks of Budapest

Pharmaceuticals: EGIS PLC (member of EGIS Group)

Government: The Romanian Ministry of Economy and Finance, Central Office for Administrative and Electronic Public Services (Hungary)

Plan. Architect. Govern.

Atoll Technologies Ltd.

Address Capital Square Irodaház,
Váci út 76., 1133 Budapest, Hungary

Phone +36 1 688 6688

E-mail info@atollgroup.eu

Web samu.atollgroup.eu

Please do not hesitate to contact us.



atoll technologies